



## EXLITE<sup>®</sup>

### Marine Blackout Screens Range

We also do Glaregard<sup>®</sup> solar screens and adhesive solar film



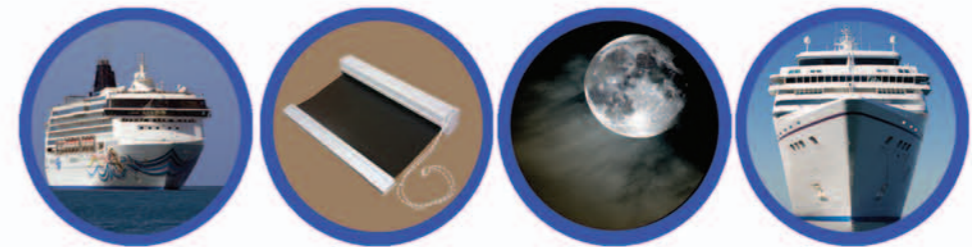
**Martek Marine Ltd**  
 6A Adwick Park  
 Manvers  
 Rotherham  
 South Yorkshire  
 S63 5AB  
 United Kingdom

**Tel: +44 (0) 1709 599 222**  
**Fax: +44 (0) 1709 871 873**

**www.martek-marine.com**  
 sales@martek-marine.com



## EXLITE<sup>®</sup>



### Marine Blackout Screens Range



Eliminates daylight completely



Suitable for saline conditions



Suitable for cold conditions



Creates a nighttime environment



100% blackout



Flame retardant



Easy wipe clean



Eliminates UV radiation 100%

**www.martek-marine.com**

*'We will excel, innovate and be remarkable to lead our market sector'*

# EXLITE®

## Blackout Screens Range

The **EXLITE®** blackout screen provides a simple, cost effective solution for non-navigational windows such as accommodation and passenger areas. The **EXLITE™** is a fully retractable screen which blocks out all light (sunlight and moonlight) giving complete privacy and creating the ideal environment for sleeping or relaxing, when not on watch.

The **EXLITE®** has white powder coated aluminium profiles giving an extremely good aesthetic appearance. The bottom rail also has a brush pile on the under side to form a good seal at the base.

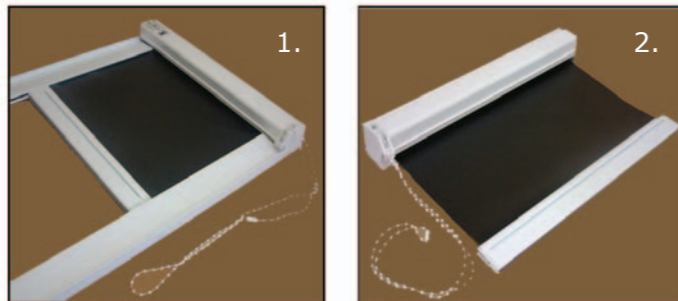
Blackout materials are fully flame retardant with a textured finish; there is a choice of seven colours in the range. The screens are simple to install and are suitable for all non-navigational windows on all vessel types including specialist vessels such as cable ships, naval and auxiliary vessels.

- **FLAME RETARDANT MATERIAL**
- **PROTECTIVE ALUMINIUM CASSETTE**
- **AESTHETIC APPEARANCE**
- **SIDE CHAIN OPERATION**
- **EASY TO INSTALL**
- **7-YEAR MECHANICAL DEFECTS WARRANTY**

## Mechanisms

We have many different mechanisms available in the **EXLITE®** blackout range

- 1 **Side channels with sidewinder operation**
- 2 **Sidewinder operation and cable guide support system**



1.Black 2.Navy 3.Green 4. Ruby 5. Grey 6.Cream 7. White



## Specifications

<b>Cassette</b>	Colour Width Depth Length Features	Powder coated white 50mm 45mm 'x'mm (made to measure) Grey brush pile
<b>Bottom Rail</b>	Colour Width Depth Length	Powder coated white 42mm 13mm 'x'mm (made to measure)
<b>Blackout Material</b>	Colour range Fabric composition Fabric weight Light	7 colours (see above colour chart) 72% pvc, 28% fibre glass 400g/m <sup>2</sup> (11.8oz/yd) 100% blocked transmission
<b>Fire Protection</b>		Fully tested to FR Standards (FTS17, BS 5867 1980 Part 2 Type B, NFPA 701 Small, AS/NZS 1530.3 1999) Tested in accordance with BS EN ISO-B01: 1999
<b>Control &amp; Operation</b>	Option 1 Operation Winder colour Winder location Winder length	Sidewinder mechanism with cable guide support Sidewinder White Right or left hand side Proportionate to screen size
	Option 2 Operation S.channel dims S.channel colour Winder colour Winder location	Sidechannels with sidewinder operation Sidewinder and side channels Width 55mm, depth 15mm, length 'x'mm Powder coated white White Right or left hand side
<b>Shapes</b>		Sidewinder with cable guide support system. Rectangular, left hand taper right hand taper, equal taper & unequal taper
		Sidechannels with sidewinder operation. Rectangular only
<b>Brackets</b>		Unifix brackets provided with each screen
<b>Powder Coating</b>		Profiles can be powder coated to match vessel surrounds Just specify chosen RAL colour (additional cost added)
<b>Warranty</b>		7-Year mechanical defects warranty